

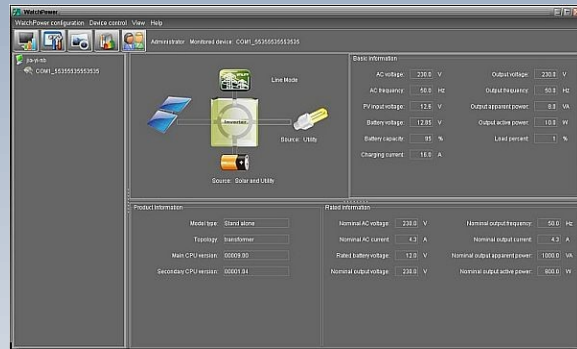
PURE SINE WAVE INVERTER-CHARGER (PIP-MS/MSX SERIES)

MAXIMUM Power Point Tracking

- MPPT 25A/60A!
- LCD DISPLAY
- HIGH FREQUENCY
- PURE SINE WAVE
- AC CHARGER
- MONITORING
- STACKABLE*
- PB ACID/LIFEPO4

* Only on 48V models

NEW Available now in 110V / 120V! (1624MSX Only)



MONITORING SOFTWARE — WATCHPOWER

KEY FEATURES

- NEW** Available now in 110/120V (1624MSX only)!
- Built-in MPPT 60A solar charger
- Max AC charging up to 60A (48v models only)
- Max total system charging: 60A + 60A = 120A !!
- High frequency, light-weight design
- Highly programmable menu
- Wide AC input range
- Adjustable Bulk/Float Voltage
- Supports various lead acid batteries, LiFePo4*
- Inverter+ AC Charger + Solar Charger 3-in-1 design
- Pure sine wave output
- 2X surge capacity up to 5 seconds
- Monitoring RJ45-RS232 capability
- LCD monitor display system info + LED indicators
- FREE monitoring software included
- Built-in generator starter dry contact
- Overload/Overtemp/short circuit protections
- Cold start capability (requires DC)

All 48V models are PARALLEL-READY. Optional Parallel Kit required for all units in parallel and sold separately.

*For LiFePo4 suitability, please check with your battery supplier on charging and BMS requirement.
Note: Product specifications are subject to change without prior notice. MPP Solar is a registered trademark of MPP Solar Inc.



PIP-MS/MSX SERIES

824

1624

2424

2424MSX

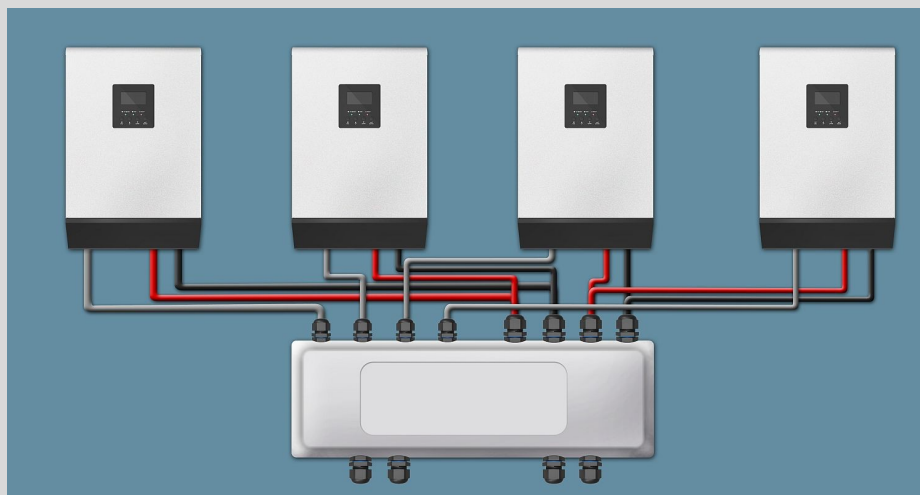
3248

4048

NEW 1624MSX

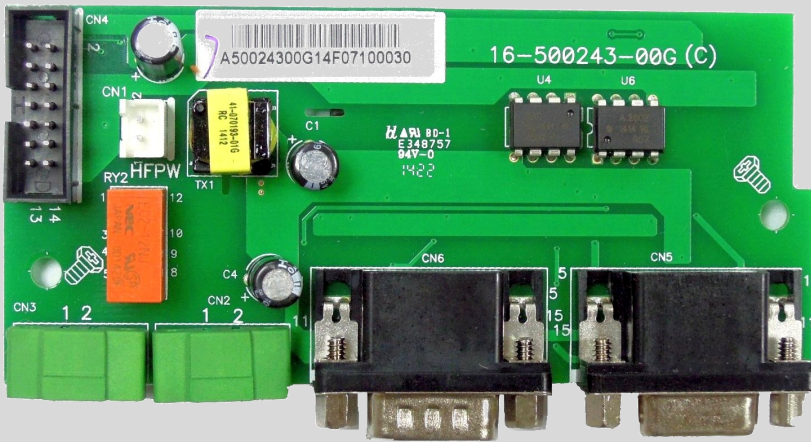
ELECTRICAL SPECIFICATIONS							
Continuous/Surge Output	800 / 1600W	1.6 / 3.2KW	2.4 / 4.8KW	2.4 / 4.8KW	3.2 / 6.4KW	4.0 / 8.0KW	1.6 / 3.2KW
Surge Rating	5 seconds max, 2X						5 seconds max 2X
Input Power Factor	0.8						0.8
Input Voltage Range	90~280VAC (Appliance mode), 170~280VAC (UPS mode)						65~140VAC, 95~140VAC
Input/Output Frequency	50/60Hz						50/60Hz
Output Voltage	230VAC±5%						110/120VAC±5%
Output Waveform	Pure Sine Wave						Pure Sine Wave
Output Regulation	< 3% RMS for battery voltage range						< 3% RMS
Output Short Circuit	Circuit Breaker						Circuit Breaker
Peak Efficiency	91%	93%					93%
Nominal DC Voltage	24V (MAX 30V)			48V (MAX 60V)			24V (MAX 30V)
Transfer Time	<10ms (UPS mode), <20ms (Appliance mode)**						<10ms, <20ms
Charging Mode	3-stage						3-stage
Boost Voltage (Flooded/MF)	29.2V/28.2V			58.4V/56.4V			29.2V/28.2V
Float Voltage (Flooded/MF)	27.0V/27.0V			54.0V/54.0V			27.0V/27.0V
AC Recharging Current	10/20amp	20/30amp			60 amp		20/30amp
No Load Power Consumption	<25W			<50W			<25W
Power Saving Consumption	<10W			<15W			<10W
Solar Charger							
Max PV Input / Output	600W		1500W		3000W		1500W
Max Charging Current	MPPT 25A		MPPT 60A				MPPT 60A
Max PV Input Voc, MPPT Range	75V, 30~66V		145V, 30~115V		145V, 60~115V		145V, 30~115V
Standby Power	2W		2W				2W
ENVIRONMENTAL / MECHANICAL SPECIFICATIONS							
Certification	CE						CE
Operating/Storage Temp.	0°C ~ 55°C / -15°C~ 60°C						0°C ~ 55°C / -15°C~ 60°C
Operating Humidity	20~90%RH Non-Condensing						20~90%RH N.C.
Dimension	355*272*128mm		479*295*140mm		468*295*120mm		479*295*140mm
Net Weight	7.5Kg	8.0Kg	8.5Kg	12Kg	13Kg	14Kg	12Kg

** Transfer time may be longer (30ms) when used in parallel configuration and this may cause interruption in certain load.





PARALLEL KIT



This accessory is applicable only to the 48VDC models of HS and MS series inverter. It is a required component to be installed in every unit of a parallel system. A parallel kit includes:

- 1 X PARALLEL BOARD
- 1 X PARALLEL COMM CABLE
- 1 X CURRENT SHARING CABLE

***IMPORTANT:** please do not wire 12v or 24v HS/MS inverters in parallel, as this will result instant damage of all units!

REMOTE CONTROL DISPLAY MODULE



This device is an extension of the HS/MS inverter's LCD module and allows user to implement control on settings and monitoring from a distance away.

This remote module can coexist with the built-in LCD device and is compatible with all models 12v/24v/48v in the HS/MS inverter series.

***Maximum operating distance: 15m via RJ45 network cable**

***For more details on pricing, availability and installation guide, please contact directly.**