

## 90 Watt Monocrystalline Bendable Photovoltaic Module

Made with high efficiency back-contact solar cells

### Electrical Characteristics

<b>Max Power</b>	<b>Pmax</b>	<b>90W</b>
<b>Max Power Voltage</b>	<b>Vmp</b>	<b>17.6V</b>
<b>Max Power Current</b>	<b>Imp</b>	<b>5.12A</b>
<b>Open Circuit Voltage</b>	<b>Voc</b>	<b>21.4V</b>
<b>Short Circuit Current</b>	<b>Isc</b>	<b>5.50A</b>
<b>Maximum System Voltage</b>		<b>600V</b>
<b>Series Fuse Rating</b>		<b>10A</b>

### Temperature Co-efficients

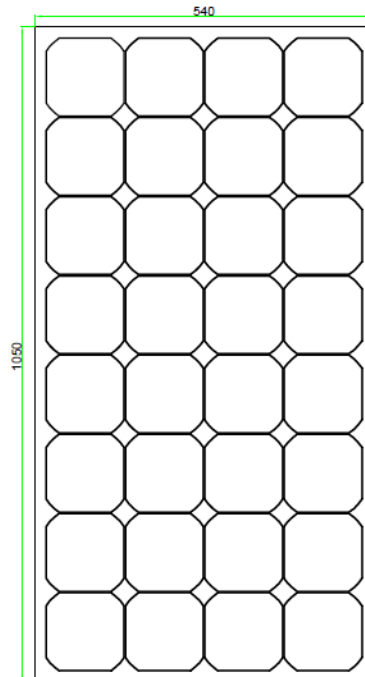
<b>Power</b>	<b>-0.38%/°C</b>
<b>Voltage</b>	<b>-60.8mV/°C</b>
<b>Current</b>	<b>2.2mA/°C</b>

<b>Cell Efficiency</b>	<b>19.0%</b>
<b>Number of Cells in Series</b>	<b>32</b>
<b>Max Power tolerance</b>	<b>±5%</b>

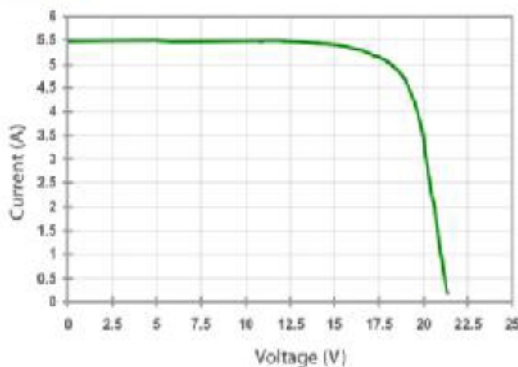
### Mechanical Characteristics

<b>Weight</b>	<b>1.35KG</b>
<b>Dimension</b>	<b>1050*540*3</b>

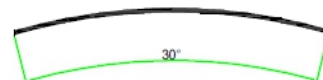
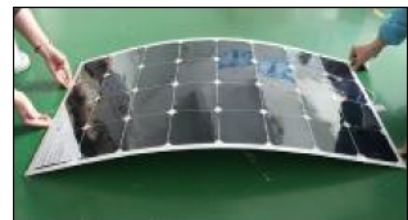
### Dimensions



### IV Curve



Note: All electrical parameters are rated at standard test conditions (irradiance of 1000W/m<sup>2</sup>, AM 1.5G, cell temperature 77°F/25°C)



Maximum recommended bending degree: 30 degree