

50 Watt Monocrystalline Bendable Photovoltaic Module

Made with high efficiency back-contact solar cells

Electrical Characteristics

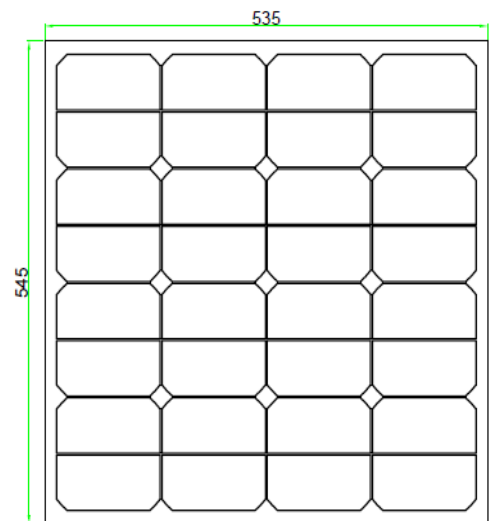
Max Power	Pmax	50W
Max Power Voltage	Vmp	17.6V
Max Power Current	Imp	2.84A
Open Circuit Voltage	Voc	21.2V
Short Circuit Current	Isc	3.05A
Maximum System Voltage		600V
Series Fuse Rating		10A

Temperature Co-efficients

Power	-0.38%/°C
Voltage	-60.8mV/°C
Current	2.2mA/°C

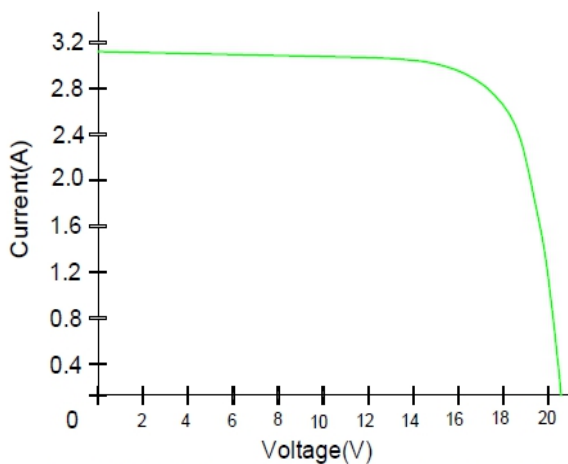
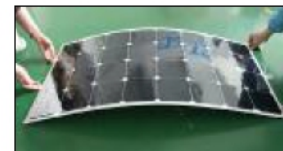
Cell Efficiency	21.5%
Number of Cells in Series	32
Max Power tolerance	±5%

Dimensions

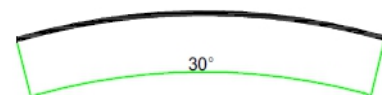


Mechanical Characteristics

Weight	0.7KG
Dimension	545*535*3



Note: All electrical parameters are rated at standard test conditions (irradiance of 1000W/m², AM 1.5G, cell temperature 77°F/25°C)



Maximum recommended bending degree: 30 degree