

30 Watt Monocrystalline Bendable Photovoltaic Module

Made with high efficiency back-contact solar cells

Electrical Characteristics

Max Power	Pmax	30W
Max Power Voltage	Vmp	17.6V
Max Power Current	Imp	1.70A
Open Circuit Voltage	Voc	21.2V
Short Circuit Current	Isc	1.83A
Maximum System Voltage		600V
Series Fuse Rating		10A

Temperature Co-efficients

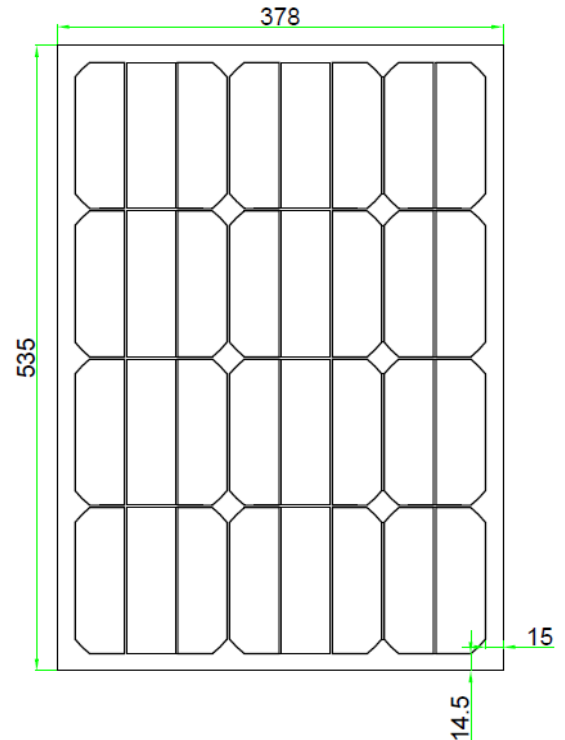
Power	-0.38%/°C
Voltage	-60.8mV/°C
Current	2.2mA/°C

Cell Efficiency 19.6%

Number of Cells in Series 32

Max Power tolerance ±5%

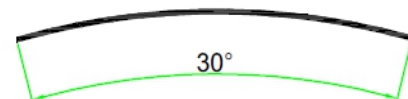
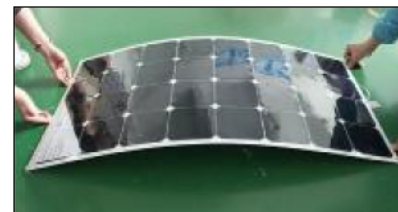
Dimensions



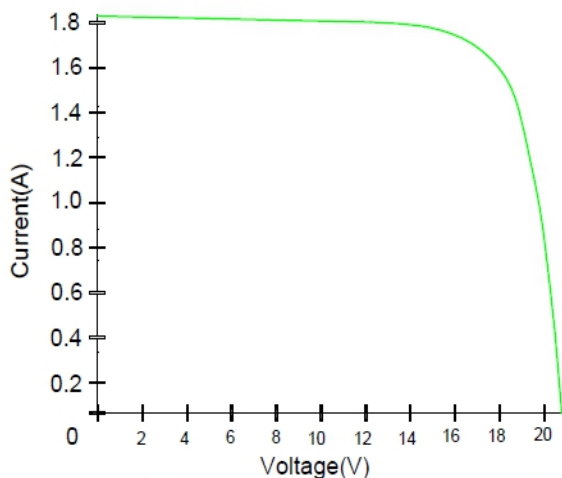
Mechanical Characteristics

Weight 0.49KG

Dimension 535*378*3



Maximum recommended bending degree: 30 degree



Note: All electrical parameters are rated at standard test conditions (irradiance of 1000W/m², AM 1.5G, cell temperature 77°F/25°C)