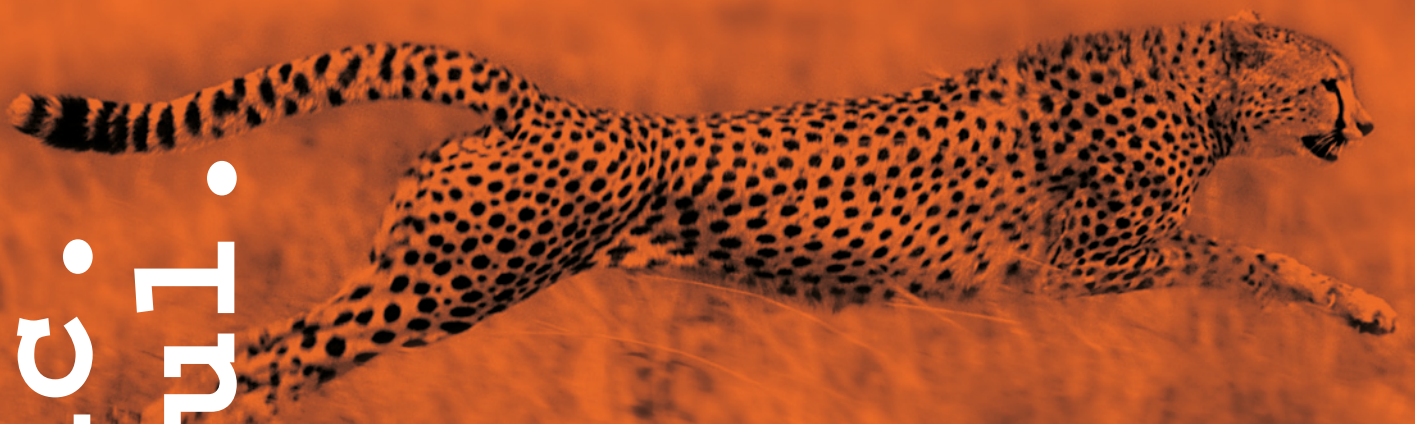


**DYNAMIC.  
POWERFUL.  
FAST.**



## **SOLPLUS 100/120**

More from the Sun with the SOLPLUS Inverters

# SOLPLUS inverters - high-efficiency, top-quality, sustainable power generation



## Intelligent inverters

The inverter is the heart of any photovoltaic installation. Not only does it convert the direct current from the solar panels into alternating current, it also performs a wide range of control functions and offers countless possibilities for analyses. SOLPLUS inverters ensure that your photovoltaic installation is a dependable source of energy - and profit - in the long term. They meet the high standards of sustainable power generation and are the subject of systematic and continuous development.

## Universal benefits to customers

The SOLPLUS 100 and 120 are new, cost- and space-optimised inverters. These 3-phase, grid-connected units are suitable for installing in medium-sized and large-scale systems and cover nominal AC power ratings from 10 to 12 kW. This type of compact string inverter enables large-scale systems to be set up cost-effectively, while guaranteeing optimised servicing. The IP65 enclosure (dust-tight and protected against water jets) makes these inverters ideal for outdoor installation.

### Efficiency

The use of state-of-the-art components, optimum MPPT control and a special switching principle guarantees great inverter efficiency of up to 98%. And the European efficiency rating of 97.3% is also higher than the market average.

### Multitracking

3 x 2 module strings, each with its own MPP tracker, can be connected to the SOLPLUS 100/120 inverters. This enables customers to combine strings installed with different roof alignments and pitches, as well as varying degrees of shadowing conditions, in one inverter.

### MPPT controller

A high-precision MPP controller ensures precise control of the inverter, with the optimum operating point of the SOLPLUS inverter being set right down to the millisecond.



SOLPLUS 100/120

```
← basic menu
mains voltage: 232V⏏
mains current: 17,9A⏏
energy day: 5.268 kWh⏏
```

Multilingual  
display  
(German,  
English,  
French,  
Italian)

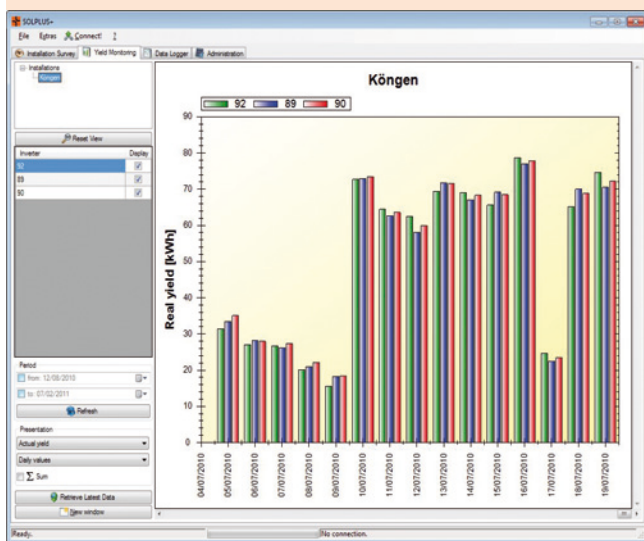




## Software: configuration and evaluation

The programs written and provided free of charge by Solutronic cover everything from configuration to firmware updates. The design program DimenSOL provides all necessary information and guidance in selecting the right SOLPLUS inverter for the installation. SOLPLUS+ is a powerful program that allows users to retrieve, i.e. read out, data. It enables the downloading, buffering and the printing-out of single items of data or graphics and processing of these data in external programs. Firmware updates are likewise easy to install using SOLPLUS+.

All these applications are available for download at [www.solutronic.de](http://www.solutronic.de) or on CD for free.



SOLPLUS+

## Service

### Default settings

All inverters are programmed with default settings before they leave the factory. Country-specific settings (for the inverters' country of installation) can be preset on request. You can then set the language you want by means of a selection menu.

### Lightweight and compact

Weighting in at around 40 kg, the SOLPLUS 100/120 are very lightweight and among the most compact inverters in their class. The cover of the enclosure is lockable and the unit itself can be secured to the wall mounting with the aid of a lock to prevent theft.

### Manufacturer's warranty

Solutronic inverters come as standard with a 6-year manufacturer's warranty. This period can also be extended to 12 years. In the event of an inverter failing, a replacement unit will be supplied within 24 to 48 hours. Solutronic also sees to it that the defective unit is picked up.

### Mounting and installation

Solutronic provides a customer telephone hotline (+49 7024 96128-20) that offers you support for assembly, installation and setting-up of the communication system. If you want us to, we will also help on site.

### Made in Germany

All Solutronic products - and we mean all components that go into them - are „Made in Germany“, right from their conception through development, their assembly to quality control, enabling us to work hand in hand with selected and renowned partners. This guarantees a high degree of transparency from start to finish. What's more, every single inverter undergoes several in-production safety checks and an endurance test. By outsourcing production, we are able to focus on customer-oriented development and the marketing of innovative inverters - the core competencies of Solutronic.

### Technical data

	SOLPLUS 100	SOLPLUS 120
Nominal AC output	10000 W	12000 W
Max. output AC	11000 W	13200 W
Max. DC power	12000 W	14400 W
MPP range	345 - 750 V	345 - 750 V
Max. DC voltage	850 V	850 V
Max. DC input current	11 A	13,2 A
Power consumption	<7 W	<7 W
Max. efficiency	98 %	98 %
European efficiency	97,2 %	97,3 %
Ambient temperature	-20 °C to +60 °C	-20 °C to +60 °C
Derating	+40 °C	+40 °C
Dimensions IP 21 H x B x T	400 x 620 x 230	400 x 620 x 230
Warranty (*optional)	6 (*12) years	6 (*12) years
Conformity	VDEW, EU, CE, ENS, ENEL DK5940, AS 4777.2 (in preparation)	

All information provided for indicative purposes only

\*Europlug

\*All information provided is subject to our current warranty conditions

With best regards from:



# SOLUTRONIC AG

Küferstr. 18 · 73257 Köngen · Germany · [www.solutronic.de](http://www.solutronic.de)  
Phone + 49 (0) 70 24-96 12 80 · [info@solutronic.de](mailto:info@solutronic.de)